



# The ATTIX Wet & Dry series are the latest in the Nilfisk-ALTO quality evolution

The Nilfisk-ALTO ATTIX series offers so much, that it is easy to find the right machine for your task

	Model:	ATTIX 791-21 Long life	ATTIX 763-21 ED	ATTIX 761-21 XC	ATTIX 751-71 Fire Brigade	ATTIX 751-61 Liquid Vac	ATTIX 751-21	ATTIX 751-11	ATTIX 590-21 Long life	ATTIX 560-31 XC	ATTIX 560-21 XC MOBILE	ATTIX 560-21 XC	ATTIX 550-21	ATTIX 550-11 MOBILE	ATTIX 550-01	ATTIX 360-21	ATTIX 360-11	ATTIX 350-01	Notes:	
<b>WET</b>		★	★	★	★	★	★	★	★	★	★	★	★	★	★	★	★	★	★	1
<b>DRY</b>		★	★	★			★	★	★	★	★	★	★	★	★	★	★	★	★	2
<b>FEATURES</b>																				
Automatic On/Off for Electric Tools		★	★	★	-	-	★	★	⓪	★	★	★	★	★	★	★	★	★	★	3
Filter Cleaning (XtremeClean, Push&Clean, or Manual)		M	XC	XC	-	-	M	M	M	XC	XC	XC	M	M	M	P	P	M		
Health & Safety (dust class)		Many models available in the Safety Vacuum Brochure																		
<b>WET &amp; DRY</b>																				
Primarily Wet applications		★	★	★	★	★	★	★	★	★	★	★	★	★	★	★	★	★	★	4
Primarily Dry applications		★	★	★			★	★	★	★	★	★	★	★	★	★	★	★	★	4
<b>DRY (WHAT)</b>																				
Large/ heavy debris (tiles, stones, cables, screws, chips, staples, glass etc.)		★						★			★			★	★					
Small / fine debris (car dirt, floor dirt, environmental dirt)		★	★	★			★	★	★	★	★	★	★	★	★	★	★	★	★	★
Very fine dust / powder		★	★							★	★	★				★	★			
<b>MOBILITY</b>																				
Transportability Site-to-Site										★	★	★	★	★	★	★	★	★	★	
Mobility On-Site (Stairs or Rough ground)		★	★	★	★	★	★	★			★				★					
<b>CLEANING WHERE</b>																				
Floor cleaning		★									★			★		★	★	★		
Working with tools		★	★	★			★	★	⓪		★	★				★				3
Fixed installations or Constant operation		★								★										

★ Best Choice is with the standard supplied accessories. Adding optional accessories will adapt your Nilfisk-ALTO ATTIX vacuum to virtually any task.

⓪ Also Pneumatic Tools

### Notes:

- 1: The ED model is suitable for picking up Damp debris, but not for Water.
- 2: The Liquid Vac (-61) and Fire Brigade Vac (-71) are not suitable for Dry pickup.
- 3: For pneumatic tools, use the Airbox accessory (302001192) with -21 variants.
- 4: Always dry the filter element after use as a wet vacuum, if the next task will be dry work.

- **CLEANING POWER** which will prove itself from each product in our ATTIX Wet & Dry range.
  - **FILTER TECHNOLOGY** for increased efficiency on two levels - the Push&Clean system and the XtremeClean filter system.
  - **ERGONOMIC DESIGN** to further improve the handling and usage of the Nilfisk-ALTO ATTIX - e.g. sturdy transportation grip, functional tool tray on top or tube holder and the accessory bag.
  - **SILENT OPERATION** to benefit users and other people working nearby.
- The Nilfisk-ALTO ATTIX technology brings the noise level to an impressive low - unheard of!

### Nilfisk-ALTO ATTIX 3

Delivers superior suction power in a compact, easy-to-transport package. Quiet, small and mobile but with the same convincing suction performance as the Nilfisk-ALTO ATTIX 5. A perfect solution for craftsmen on the move! And with the Push&Clean filter cleaning system, even fine dust and powder won't interrupt your work for more than the few seconds it takes to push the button.

### Nilfisk-ALTO ATTIX 5

Is the solution for customers with a higher frequency of cleaning, and require more container volume. Nilfisk-ALTO ATTIX 5 will solve any task with a high degree of efficiency, and models with fully automatic XtremeClean will handle fine dust and powder automatically, while you continue working.

### Nilfisk-ALTO ATTIX 7

Is the perfect solution for jobs that require high container volume and efficiency. The 70 liter container can be easily emptied by tilting or lifting-off, and the XtremeClean solution allows you to continue working while the filter is cleaned automatically. Nilfisk-ALTO ATTIX 7 is perfect for the BIG jobs.

Nilfisk-ALTO (division of Nilfisk Advance A/S) is the number one professional cleaning equipment company with a turnover of 630 million € and 3800 employees. We are located in all main European countries, US and Asia with our headquarters in Denmark and production facilities in Germany, Denmark, Hungary, Singapore, China, Italy and the US.

We supply quality high pressure washers, vacuum cleaners and floor care equipment to agriculture, automotive and industrial companies, cleaning contractors and private consumers.

Nilfisk-ALTO is a product driven company with focus on innovation and growth. We believe in developing and maintaining long lasting relationships with our customers, suppliers and employees.

No claims can be made on the basis of information or illustrations contained in this catalogue. Subject to alteration of technical data, design and equipment.

**Nilfisk**  
**ALTO**  
Why Compromise

Nilfisk-ALTO  
Division of Nilfisk-Advance A/S  
Industrivej 1 • DK-9560 Hadsund  
Phone (+45) 72 18 21 00 • Fax (+45) 72 18 21 05  
www.nilfisk-alto.com

# Nilfisk-ALTO ATTIX – WHY COMPROMISE

*Xtreme Wet & Dry vacuum performance*

## Nilfisk ALTO

*Why Compromise*



*Wap*  
**KEW**

TECHNOLOGIES

Powerful, efficient, silent



# Nilfisk-ALTO ATTIX 7

*Superior suction power, silent operation and innovative features. - Why compromise*



## Nilfisk-ALTO ATTIX 7 offers so much more to Wet & Dry vacuum cleaning

### ERGONOMIC DESIGN

The ultimate in convenience... You will appreciate the robust, comfortable handle for mobility, the efficient tilt or lift-out container, the handy tool tray and the practical suction tube holder. Easy to use = high efficiency.

### SILENT POWER

because the best vacuums are seen and not heard. Friendly for the users, and for other people nearby. Performance that is simply unheard of!

### ROBUST

Robust with a steel frame and stainless steel container.



ATTIX 7 Safety Vacuums



The Nilfisk-ALTO ATTIX 7 Series includes Safety Vacuum variants that comply with the new European standards for both M-Class and H-Class hazardous dust, and ATEX Type 22 – B1 explosive dust. You can see the details in the Safety Vacuum brochure.

**XtremeClean**  
Filter Cleaning System



**Just keep on working with automated filter cleaning:**

## **XtremeClean** Filter Cleaning System

Nilfisk-ALTO now offers the impressive filter cleaning system called XtremeClean. The name is characteristic for the cleaning level of this system: Extremely efficient and completely automatic. This saves you time and money. The best filter cleaning system that the market has ever seen.

All you have to do is start the vacuum. The filter is immediately cleaned automatically, and every 30 seconds while you work. So there is no need to interrupt your work to clean your filter. You concentrate on your task, and XtremeClean will take care of the filter.

### **Powerful air pulses clean the filter gently and:**

- Keep the suction performance constantly high
- Extend the life of the filter and reduce your costs
- Save you working time without interruptions
- Improve the reliability of the machine

#### **XtremeClean filter cleaning technology**

*Advanced technology delivers automatic filter cleaning while you work with full vacuum performance. The XtremeClean technology is based on a valve controlled solution, using reversed air flow to clean the one half of the filter cartridge - while you still work with the other half of the filter cartridge. The valve allows the surrounding air to enter into the container, passing through the filter in the opposite direction. The dirt is blasted off the filter and the suction performance is always high.*



**Mobility and Transport**  
With the comfortable integrated handle, it's easy to take your Nilfisk-ALTO ATTIX 7 where the work is.



**Versatile container handling**  
You can tilt the container to empty it, or simply lift it out of the frame when it is time to empty it.

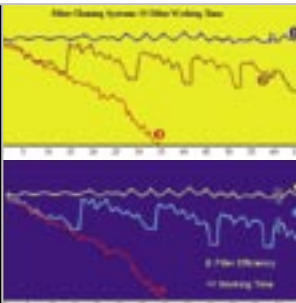


**HIGH PERFORMANCE**  
with 2-stage turbines and bypass motors.

**HIGH EFFICIENCY**  
for users with the tilting and removable container, and optional features like XtremeClean and Automatic On/Off.

*XtremeClean technology lets you keep working longer, even working with fine dust.*

- ① XtremeClean
- ② Semi-automatic filter cleaning systems
- ③ Manual filter cleaning systems.



## **XtremeClean**



Xtreme water pick up!



# Nilfisk-ALTO ATTIX 7 – SPECIAL PURPOSE VACUUMS

*Liquid Vac, Fire Brigade and EasyDisposal*



## Special solutions for special applications...

A logical extension of the high capacity Nilfisk-ALTO ATTIX 7 Series are the Liquid Vac for flood cleanup, the Fire Brigade model for cleanup after fires or road-spills, and the EasyDisposal machines, which allow you to change the disposal bag quickly and get back to your task.



### Nilfisk-ALTO ATTIX 751-61

The Liquid-Vac will pick up water at 200 liters per minute and discharge it as much as 9 m higher and 50 m away from the cleanup.



### Nilfisk-ALTO ATTIX 751-71

Specifically designed and equipped for Fire Brigade use, cleaning up after highway accidents or fires.



### Nilfisk-ALTO ATTIX 763-21 ED

External disposal bags and the XtremeClean system make working with the ED model quick and efficient.

# THE FACTS - FOR XTREME PERFORMANCE



▲ ATTIX 761-21 XC



▲ ATTIX 791-21



▲ ATTIX 751-11  
ATTIX 751-21



▲ ATTIX 751-61



▲ ATTIX 751-71



▲ ATTIX 763-21 ED

Technical data:	ATTIX 761-21 XC	ATTIX 791-21	ATTIX 751-21	ATTIX 751-11	ATTIX 751-61	ATTIX 751-71	ATTIX 763-21 ED
Air flow rate l/min.	3600	3800	3600	3600	3600	3600	3600
Vacuum mbar/KPa	230/23	250/25	230/23	230/23	230/23	230/23	230/23
Power Pmax W	1500	1500	1500	1500	1500	1500	1500
Power PIEC W	1200	1200	1200	1200	1200	1200	1200
Mains connection V~/Hz	230/1~/50-60	230/1~/50-60	230/1~/50-60	230/1~/50-60	230/1~/50-60	230/1~/50-60	230/1~/50-60
Working sound level dB(A)	57	57	57	57	57	57	57
Container volume l	70	70	70	70	-	-	30
L x W x H mm	605 x 580 x 970	605 x 580 x 970	605 x 580 x 970	605 x 580 x 970	605 x 580 x 970	510 x 480 x 875	605 x 580 x 1284
Weight w/o accessories kg	27	25	25	25	33	31	17
Mains cable m	7.5	7.5	7.5	7.5	7.5	10	7.5

## Features:

Features:	ATTIX 761-21 XC	ATTIX 791-21	ATTIX 751-21	ATTIX 751-11	ATTIX 751-61	ATTIX 751-71	ATTIX 763-21 ED
Filter Cleaning System	XtremeClean						XtremeClean
Auto On/Off	●	●	●				●
Convenience El. Socket				●			
SoftStart	●	●	●	●	●	●	●
Speed Control	●	●	●	●	●	●	●
AntiStatic	●	●	●		●	●	●
Cable hook	●	●	●	ready	ready	ready	●
Tube Holder	●	●	●	●	●		●
Tool tray	●	●	●	●	●	●	●

## Standard Accessories:

Standard Accessories:	ATTIX 761-21 XC	ATTIX 791-21	ATTIX 751-21	ATTIX 751-11	ATTIX 751-61	ATTIX 751-71	ATTIX 763-21 ED
Hose (dia x length) mm x m	Ø 27 x 3.5	Ø 27 x 3.5	Ø 27 x 3.5	Ø 36 x 4		Ø 36 x 3.5	Ø 36 x 5
Curved hand tube				●		●	●
Extension tube						●	●
Floor nozzle						●	●
Crevice nozzle						●	
Rubber nozzle				●			
Tool adapter	●	●	●				
Filter cartridge, washable	PET fleece	PET fleece	PET fleece	PET fleece			PET fleece
Filter bag	1	1	1	1			
Disposal bag	1						1



# Nilfisk-ALTO ATTIX 5 - WET & DRY XTREME SILENCE

*Superior suction power, silent operation and innovative features – why compromise*



◀ **PET-fleece filter cartridge**  
Washable and long lasting filter cartridge with high filtration rate for a clean air.

## The most silent worker in your company

The Nilfisk-ALTO ATTIX 5 has been developed for users who need a larger capacity with features that focus on efficiency. Additionally it gives the most silent operation in the Nilfisk-ALTO range ever. If you then add superior suction performance, automatic filter cleaning, anti-static capability and many other features - you end up with a market leading Wet & Dry solution, perfect for your company - workshop, garage, production, farm etc.

### SILENT OPERATION

The low working sound level is an important feature for a comfortable working environment.

### CABLE HOOK, TUBE\* & ACCESSORY HOLDER

Have everything in one place. It also allows compact storage of the machine after use.

### XTRA BIG WHEELS AND CASTORS

For good mobility even on different or uneven

### ERGONOMIC AND STURDY GRIP

The machine can be moved around comfortably – even with a filled container.

### ROUND SWITCH & POWER CONNECTION\*

The switch can be used easily even wearing gloves. It always indicates whether the machine is on or off. The automatic power connection\* allows you to use electric tools.

### SUPERIOR SUCTION PERFORMANCE

The power you need for better cleaning results and less cleaning effort in a shorter cleaning time.

\* Standard on different variants.

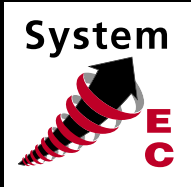


**ATTIX 5 Safety Vacuums**



The Nilfisk-ALTO ATTIX 5 Series includes Safety Vacuum variants that comply with the new European standards for both M-Class and H-Class hazardous dust. You can see the details in the Safety Vacuum brochure.





**The EC-Drive system on Nilfisk-ALTO ATTIX 5 & 7:**  
 A brushless, ignition-source-free single-phase EC motor that is electronically regulated for precise power control. the EC-Drive motor delivers nearly 6% higher air flow than a Universal motor, for the same energy cost.

- Compact construction
- 230 V Single phase
- Extended life-time
- No sparks or carbon dust from the motor

Technical data:	ATTIX 560-31 XC	ATTIX 560-21 XC	ATTIX 560-21 XC MOBILE	ATTIX 590-21	ATTIX 550-21	ATTIX 550-11 MOBILE	ATTIX 550-01
Air flow rate l/min.	3600	3600	3600	3800	3600	3600	3600
Vacuum mbar/KPa	230/23	230/23	230/23	250/25	230/23	230/23	230/23
Power (max) W	1500	1500	1500	1500	1500	1500	1500
Power (IEC) W	1200	1200	1200	1200	1200	1200	1200
Mains connection V/~ /Hz	230/1~/50-60	230/1~/50-60	230/1~/50-60	230/1~/50-60	230/1~/50-60	230/1~/50-60	230/1~/50-60
Working sound level dB(A)	57	57	57	59	57	57	57
Container volume l	45	45	45	45	45	45	45
L x W x H mm	506 x 476 x 655	506 x 476 x 655	506 x 476 x 655	506 x 476 655	506 x 476 x 655	506 x 476 x 655	506 x 476 x 655
Weight w/o accessories kg	16	16	16	14	14	14	14
Mains cable m	7.5	7.5	7.5	7.5	7.5	7.5	7.5

Features:	ATTIX 560-31 XC	ATTIX 560-21 XC	ATTIX 560-21 XC MOBILE	ATTIX 590-21	ATTIX 550-21	ATTIX 550-11 MOBILE	ATTIX 550-01
Filter Cleaning System	XtremeClean	XtremeClean	XtremeClean				
Auto On/Off - Elec Tools	①	●	●	●	●		
Convenience El. Socket						●	
SoftStart	●	●	●	●	●	●	
Speed control	●	●	●	●	●		
AntiStatic	●	●	ready	●	●	ready	ready
Cable Hook	●	●	●	●	●	●	●
Tube holder						●	●
Tool tray	●	●	●	●	●	●	●

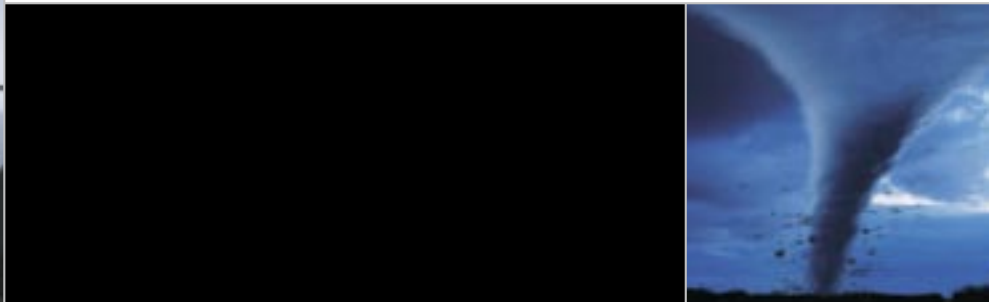
Standard Accessories:	ATTIX 560-31 XC	ATTIX 560-21 XC	ATTIX 560-21 XC MOBILE	ATTIX 590-21	ATTIX 550-21	ATTIX 550-11 MOBILE	ATTIX 550-01
Hose (dia x length) mm x m	Ø 27 x 3.5	Ø 27 x 3.5	Ø 36 x 4	Ø 27 x 3.5	Ø 27 x 3.5	Ø 36 x 3	Ø 36 x 3
Curved hand tube			●			●	●
Extension tube			●			●	●
Floor nozzle			●			●	●
Crevice nozzle			●			●	●
Rubber nozzle			●				
Tool adapter	●	●		●	●		
Folding transport handle			●			●	
Filter cartridge, washable	PET fleece	PET fleece	PET fleece	PET fleece	PET fleece	PET fleece	PET fleece
Filter bag				1	1	1	1
Disposal bag	1	1	1				

① for Electric and Pneumatic tools



# Nilfisk-ALTO ATTIX 3 - WET & DRY ON THE MOVE

*A compact and flexible vacuum cleaner solution. – why compromise*



## Nilfisk-ALTO ATTIX 3 – a product dedicated to performance and mobility

The Nilfisk-ALTO ATTIX 3 is the Compact end of the ATTIX range. The perfect solution for craftsmen and other professionals on the move. Bring the Nilfisk-ALTO ATTIX 3 along and remove every trace of your work quickly and completely... and with a power surplus much higher than you would expect from such a small and compact machine.

### SILENT OPERATION

The low working sound level is an important feature for a comfortable working environment.

### CABLE HOOK & ACCESSORY HOLDER

Have everything in one place. It also allows proper storage of the machine after use.

### CONTAINER DESIGN

The slim design allows easy transport. The container has no seams and no “blind-corners” inside, so emptying is not a problem.



### ERGONOMIC AND STURDY GRIP

The machine can be moved around comfortably – even with a filled container.

### ROUND SWITCH & POWER CONNECTION\*

The switch can be used easily even wearing gloves. It always indicates whether the machine is on or off. The automatic power connection\* allows you to use electric tools.

### SUPERIOR SUCTION PERFORMANCE

The power you need for better cleaning results and less cleaning effort in a shorter cleaning time.

*\* Standard on different variants.*



## ATTIX 3 Safety Vacuums



The Nilfisk-ALTO ATTIX 3 series includes Safety Vacuum variants that comply with all current requirements of the new European standard and employer's liability associations, to deal with hazardous dusts of dust class H & M. You can see the details in the Safety Vacuum brochure.



**PET-fleece\* filter cartridge**  
Washable and long lasting filter cartridge with high filtration rate for a clean air. ▲

**Push&Clean button\***  
For cleaning the filter just cover the fitting or the tube and press the button. ▶



Constant high suction performance due to:

# Push&Clean

Filter Cleaning System

If your work is with “normal” dirt, you may not need a filter cleaning system... But if you are working with fine dust, you are surely familiar with the dreaded task of cleaning clogged filter cartridges to restore normal suction performance.

With Push&Clean, all you have to do to clean the filter, is to cover the fitting or the hose and press the button. Powerful air pulses will clean the filter gently, and you are back to work in no time.

## The Push&Clean filter cleaning system:

- Keeps suction performance constantly high
- Extends the life of the filter and reduces your costs
- Saves you working time
- Improves the reliability of the machine

**Push&Clean filter cleaning technology**  
The Push&Clean technology allows a fast and simple cleaning of the filter cartridge. When you block the fitting for the air inlet or the hose and push the filter cleaning button, the surrounding air enters into the container, passing through the filter cartridge in the opposite direction. The dirt is blasted off the filter and the suction performance is high again. A comfortable and powerful but gentle way of cleaning the filter.

## Push&Clean



### Technical data:

		ATTIX 360-21	ATTIX 360-11	ATTIX 350-01
Air flow rate	l/min.	3600	3600	3600
Vacuum	mbar/KPa	230/23	230/23	230/23
Power (max)	W	1500	1500	1500
Power (IEC)	W	1200	1200	1200
Mains connection	V~/Hz	230/1~/50-60	230/1~/50-60	230/1~/50-60
Working sound level	dB(A)	59	59	59
Container volume	l	27	27	27
L x W x H	mm	390 x 380 x 570	390 x 380 x 570	390 x 380 x 570
Weight w/o accessories	kg	10	10	10
Mains cable	m	7.5	7.5	7.5

### Features:

	ATTIX 360-21	ATTIX 360-11	ATTIX 350-01
Filter Cleaning System	Push&Clean	Push&Clean	
Auto On/Off	●		
Convenience El. socket		●	
SoftStart	●		
Speed control	●		
AntiStatic	ready	ready	
Cable hook	●	●	●
Tool tray	●	●	●

### Standard Accessories:

	ATTIX 360-21	ATTIX 360-11	ATTIX 350-01
Hose (dia x length)	Ø 32 x 3	Ø 32 x 3	Ø 32 x 3
Curved hand tube	●	●	●
Extension tube	●	●	●
Floor nozzle	●	●	●
Crevice nozzle	●	●	●
Brush nozzle	●	●	
Tool adapter	●		
Filter cartridge, washable	PET fleece	PET fleece	PET fleece
Filter bag	1	1	1

# Nilfisk-ALTO OFFERS MORE DEDICATED SOLUTIONS...

*In order to accommodate specific customer needs Nilfisk-ALTO has developed a full range of accessories and accessory sets. You will find more accessories and more sets in the main Nilfisk-ALTO catalogue.*



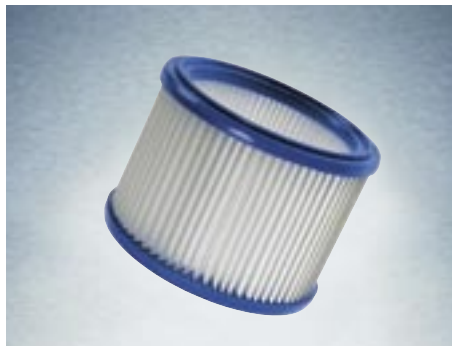
## Accessories for Nilfisk-ALTO ATTIX



### Filter bags

2-ply filter bag in sturdy quality and with high filtration rate. PU 5 pcs. The original Nilfisk-ALTO quality.

<b>ATTIX 3</b>	<b>302000449</b>
<b>ATTIX 5</b>	<b>302000527</b>
<b>ATTIX 7</b>	<b>302001484</b>



### Filter Cartridge

Filter cartridge made of washable PET-fleece with high filtration rate and long service life.

<b>ATTIX 3, 5 &amp; 7</b>	<b>302000461</b>
<b>ATTIX 5 &amp; 7, XtremeClean</b>	<b>302000726</b>



### Airbox

Simply plug the Airbox into any -21, Auto On/Off model, and connect your pneumatic tools for pneumatic On/Off operation.

<b>ATTIX 3, 5 &amp; 7 (230v)</b>	<b>302001192</b>
----------------------------------	------------------



### Accessory net

Helps carrying different goods like accessories or small tools. Content is visible. Kit incl. screws.

<b>ATTIX 3</b>	<b>302000607</b>
<b>ATTIX 5 &amp; ATTIX 7</b>	<b>302000524</b>



### Exhaust air collector

To collect the exhaust air and lead it out of the room. Ideal for 100% clean rooms. Can also be used to blow some dirt out of hard-to-reach places. Kit incl. screws.

<b>ATTIX 5 &amp; ATTIX 7</b>	<b>302000522</b>
------------------------------	------------------



### Handle, folding

Offers an extreme comfortable handling when the machine is transported. Kit incl. screws.

<b>ATTIX 5</b>	<b>302000523</b>
----------------	------------------



**Accessory net**  
For transportation of even more accessories, an accessory net is available and can be mounted on the vac.

**Handle (Folding)**  
A comfortable way to transport your vac.

**Exhaust air collector**  
If you want to get rid of the vacuumed air - just use the exhaust air collector. Can also be used to blow some dirt out of hard-to-reach places.



## Selection of some accessory sets



**Industrial/floor set** **No. 63214**  
4-piece, 36 mm dia. connection  
4 m suction hose, oil-resistant 61779  
Curved hand tube, stainless steel 46691  
2 Suction tubes, stainless steel 15546  
Large-capacity floor nozzle with rubber lips 15349



**Industrial set** **No. 63216**  
6-piece, 50 mm dia. connection  
4 m suction hose 15358  
Anodised aluminium extension tube 15335  
Industrial floor nozzle, aluminium 15343  
Replacement rubber lips 15346  
Crevice nozzle, special plastic 7102  
Coarse dirt nozzle, aluminium 41100



**Workshop set** **No. 302000927**  
6-piece, 36mm dia. connection  
4m suction hose, universal 25537  
Curved hand tube, stainless steel 46691  
2 x 500 mm suction tubes 15546  
Professional floor nozzle, 360mm 60356  
Crevice nozzle, plastic 6084  
Diagonal tube nozzle, rubber 5067



**Pipe cleaning set** **No. 63215**  
4-piece, 38 mm dia. connection  
4 m suction hose 15365  
2.5 m anodised aluminium extension tube 15340  
Tube cleaning nozzles for 70-120 mm dia. 7964  
for 120-200 mm dia. 8054



**Oven cleaning set** **No. 14341**  
3-piece, 38 mm dia. connection  
4 m suction hose 6070  
2,5 m anodised aluminium extension tube 15340  
Oven nozzle "XL" 63380



**Chip set** **No. 61681**  
2-piece, 50 mm dia. connection  
4 m aluminium suction hose 15182  
Diagonal tube nozzle, rubber 7868